



### Key Benefits of the Static Plate Load Tester

- Determines the static subgrade modulus E and spring stiffness K at an affordable cost
- Immediate on site results at the time of testing
- Quality Assurance procedures and standards
- Capability to undertake multiple tests per day
- Trained and experienced personnel



**TEST RIGHT • BUILD RIGHT**

**Northland**  
166 Bank Street, Whangarei  
+64 9 438 4417

**Canterbury**  
577 Hills Road, Marshland, Christchurch  
+64 27 6565 317

**Wellington**  
47C Kenepuru Drive, Porirua  
+64 27 656 5220

**Web:** [www.geocivil.co.nz](http://www.geocivil.co.nz)  
**Email:** [info@geocivil.co.nz](mailto:info@geocivil.co.nz)



## STATIC PLATE LOAD TESTER

as per

**DIN 18134-2012 &  
ASTM D1196/D1196M-12**



**TEST RIGHT • BUILD RIGHT**



## Applications

### Highways and Bridges

- MSE walls
- Highway embankments

### Geotechnical Engineering

- Foundation soils testing
- Testing of backfill for foundations
- Gravel rafts and structural fills

### Earthworks

- Quality Assurance for quarries and aggregates

### Land Development

- Quality Assurance of temporary works
- Assessment of site suitability

### Civil Works and Infrastructure

- Marine works, Airports and Airfields
- Compacted gravel drains

## Static Plate Load Tester

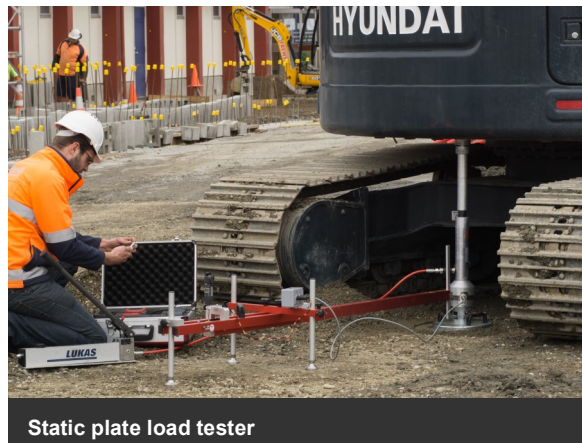
The static plate load tester is an innovative instrument that determines:

- The static deformation modulus  $E_{v1}$  and reload modulus  $E_{v2}$
- The spring stiffness

It can be used in all types of earth works and ground engineering applications such as:

- Compaction control
- Load-bearing capacity of base, subbase and sub-grade
- Testing to 1.5m below plate level

The most essential test for undertaking performance based design of pavements



Static plate load tester

## Advantages

The integrated technology of the static plate load tester enables you to manage and control your compaction works, saving both time and cost and to improve the quality of your construction.

- Portable and precise equipment
- Bearing pressure of up to 1400kPa can be applied
- Minimal time for the procedure
- Immediate documentation of the data with printout
- Repeatable and reliable
- In-built GPS allows for accurate mapping of the assessed location.

## Complementary services

- Light Weight Deflectometer (LWD)
- Nuclear Densometer Measurement (NDM)
- Dynamic Cone Penetration test (DCP)
- Particle size distribution
- Plasticity index, hand auger, shear vane.